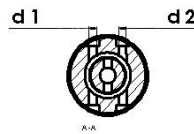
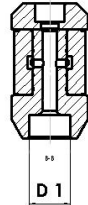
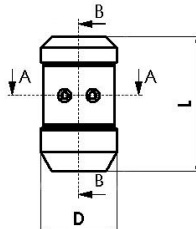


# Pipe Cleaning Nozzle 1000 bar

rotating outer Ø above 22 mm

Z 46-5e

01.01.2017



**Order example: Part no. As well as working pressure and flow rate of the used pump**

## RTS - 4x Radial jet d1 + d2

Part no.	Order no.	Nozzle insert	D mm	L mm	Connection D1	Jet angle d1	Jet angle d2	min. – max. pipe inner Ø mm
7022815	3001.0.14	drilled	22	50	G 1/8" IG	2x 85°	2x 85°	25 – 50
7023986	3002.0.15	drilled	22	50	G 1/4" IG	2x 85°	2x 85°	25 – 50
7020926	3003.2.15	M 4	28	60	G 1/4" IG	2x 85°	2x 85°	35 – 80
7027518	RD 35.2	M 4	35	63	G 1/4" IG	2x 85°	2x 85°	40 – 100
7002767	3006.1.09	M 6	40	83	M 24x1.5 DKO	2x 85°	2x 85°	45 – 150
7002747	3007.1.09	M 6	50	93	M 24x1.5 DKO	2x 85°	2x 85°	55 – 200

## RTKH - 2x Radial jet d1 and 2x backward jet d2

Part no.	Order no.	Nozzle insert	D mm	L mm	Connection D1	Jet angle d1	Jet angle d2	min. – max. pipe inner Ø mm
7022813	3025.0.14	drilled	22	50	G 1/8" IG	2x 80°	2x 40°	25 - 50
7014872	3026.0.15	drilled	22	50	G 1/4" IG	2x 80°	2x 40°	25 - 50
7020930	3027.2.15	M 4	28	60	G 1/4" IG	2x 80°	2x 40°	35 - 80
7013683	RD 35.2	M 4	35	63	G 1/4" IG	2x 85°	2x 45°	40 - 100
7014389	3030.1.09	M 6	40	83	M 24x1.5 DKO	2x 80°	2x 40°	45 - 150
7002766	3031.1.09	M 6	50	93	M 24x1.5 DKO	2x 80°	2x 40°	55 - 200

## RTKV - 2x Radial jet d1 and 2x forward jet d2

Part no.	Order no.	Nozzle insert	D mm	L mm	Connection D1	Jet angle d1	Jet angle d2	min. – max. pipe inner Ø mm
7002765	3035.0.04	drilled	22	50	G 1/8" IG	2x 80°	2x 40°	25 - 50
7024651	3036.0.15	drilled	22	50	G 1/4" IG	2x 80°	2x 40°	25 - 50
7015308	3037.2.15	M 4	28	60	G 1/4" IG	2x 80°	2x 40°	35 - 80
7015164	RD 35.2	M 4	35	63	G 1/4" IG	2x 85°	2x 45°	40 - 100
7002760	3040.1.09	M 6	40	83	M 24x1.5 DKO	2x 80°	2x 40°	45 - 150
7002751	3041.1.09	M 6	50	93	M 24x1.5 DKO	2x 80°	2x 40°	55 - 200

### **Number:**

The available nozzle inserts have a different numbers as:

**0 = no insert; only with bores**

**1 = ceramic**

**2 = steel**

Further nozzle versions on request!