

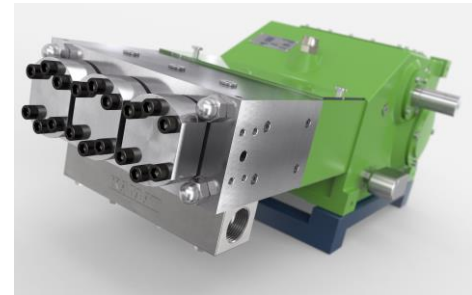
Triplex Plungerpumpe K 11000 – 3G

Triplex Plunger Pump

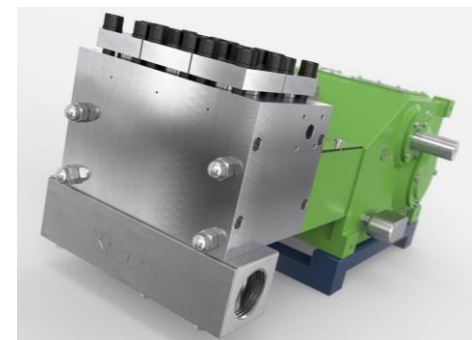
P 20-1

30.05.2015

- Förderstromangaben mit 100% volumetrischem Wirkungsgrad und 20°C Umgebungstemperatur
- Mindestvordrücke je nach Fördermedium
- Drehzahlbereich 10-100% je nach Stangenkraft
- Getriebe dynamisch gewuchtet
- Getriebe mit Tauchschmierung
- Standard Getriebeuntersetzungen
i = 3,00 - 3,14 - 3,39 - 3,76 - 4,13 - 4,50 - 4,93
- Auch nach API 674 lieferbar
- Sondermedien wie Seewasser, Glykol, Methanol, Öle, etc. auf Anfrage



- Flow rate is based on 100% volumetric efficiency and 20°C ambient temperature
- min. inlet pressure depending on fluid medium
- Speed range 10-100% depending on rod force
- Gear dynamically balanced
- Gear with splash lubrication
- Standard gear ratios
i = 3,00 - 3,14 - 3,39 - 3,76 - 4,13 - 4,50 - 4,93
- Also available to API 674
- Special medium such as sea water, glycol, methanol, oils, etc. on request



$n_{nom} = 435 \text{ 1/min}$		p max. bar @ kW				Kopftyp / Head type		
Typ / Type	l/min	60 kW	75 kW	90 kW	110 kW	A	M	MC
K 11014 - 3G	21	1500	1880	2260	2760	1		
K 11016 - 3G	28	1150	1440	1730	2120	1		
K 11018 - 3G	35	910	1125	1340	1670	1		
K 11020 - 3G	43	760	920	1100	1305	2		
K 11022 - 3G	52	625	775	920	1075	2		H
K 11024 - 3G	62	525	655	790	905	2		H
K 11026 - 3G	73	445	560	670	770	2		H
K 11028 - 3G	84	390	485	580	665	2		H
K 11030 - 3G	97	335	420	505	580	2		H
K 11032 - 3G	110	295	370	445	505	2		H
K 11036 - 3G	139	225	285	340	400	2	1	H
K 11040 - 3G	172	180	225	270	325		1	1
K 11045 - 3G	218	140	175	210	255		1	1
K 11050 - 3G	269	115	145	170	205		1	1
K 11055 - 3G	326	95	120	140	170		1	1
K 11060 - 3G	387	80	100	120	145		1	1
K 11065 - 3G	454	70	85	105	125			1

API 674 = max. 340 1/min

= Ultra High Pressure UHP

Maßzeichnung K 11000 – 3G

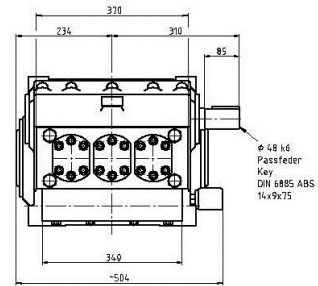
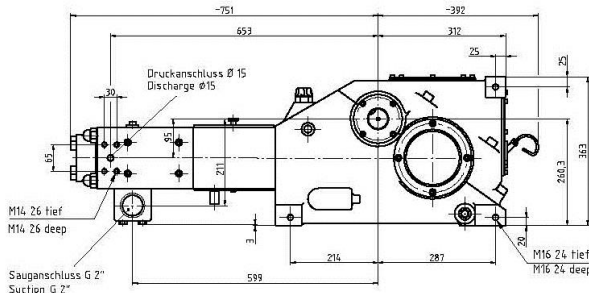
Dimension drawing

~ 425 kg

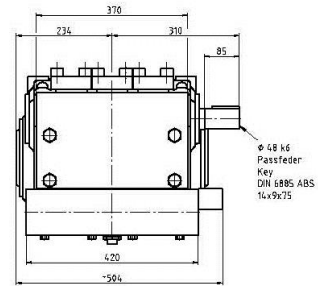
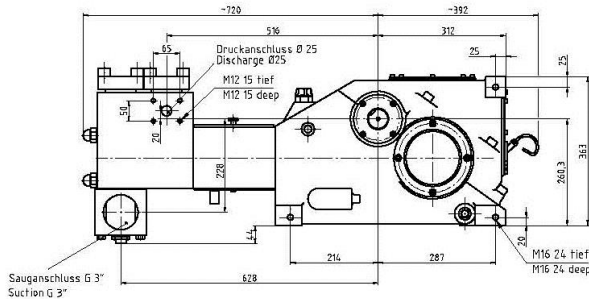
P 20-2

01.05.2017

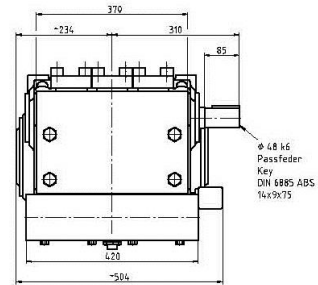
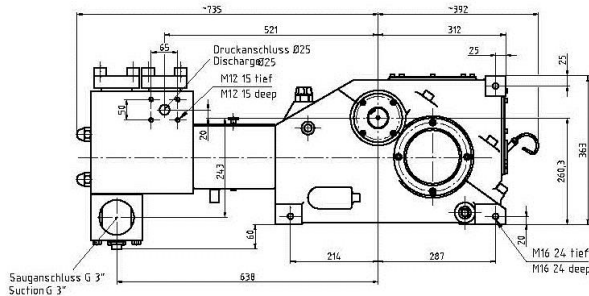
Typ A
Type A



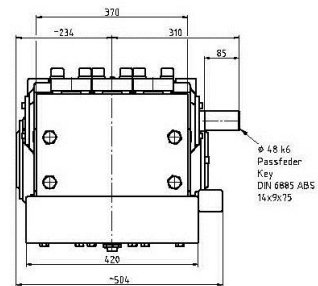
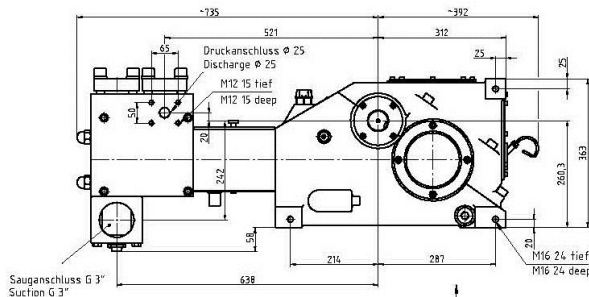
Typ M
Type M



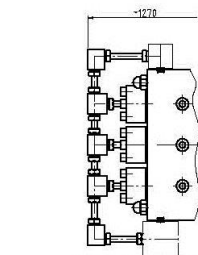
Typ MC
Type MC



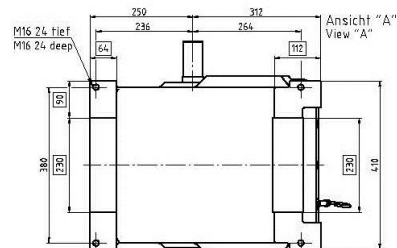
Typ MCH
Type MCH



Typ A
Type A
≥ 1500 bar



Fußmaßzeichnung
Footprint



Höchstdruckkopf ≥ 1500 bar
High Pressure Head ≥ 15000 bar