

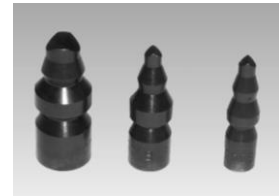
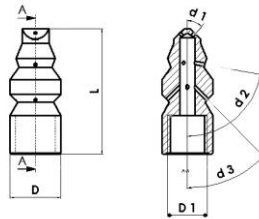
Pipe Cleaning Nozzle 1000 bar

rigid outer $\varnothing < 17$ mm

Z 46-2e

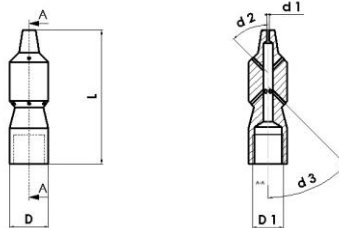
01.01.2017

in step form



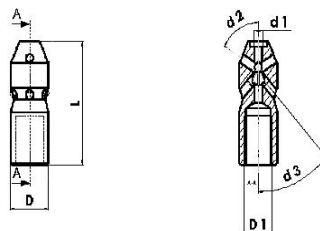
Part no.	Order no.	L mm	D mm	Nozzle inserts	Connection D1	d 1 45°	d 2 80°	d 3 45°	min. – max. pipe inner \varnothing mm
7024306	4801.04	38	10	drilled	M7 female	2 x 45°	4 x 80°	4 x 45°	15 - 30
7024307	4802.14	40	13	drilled	G 1/8" female	2 x 45°	4 x 80°	4 x 45°	20 - 50
7023985	4803.15	42	17	drilled	G 1/4" female	2 x 45°	4 x 80°	4 x 45°	30 - 80

with tip



Part no.	Order no.	L mm	D mm	Nozzle inserts	Connection D1	d 1 45°	d 2 80°	d 3 45°	min. – max. pipe inner \varnothing mm
7023252	4901.04	42	10	drilled	M7 female	1 x	3 x 45°	6 x 45°	15 - 30
7023253	4902.14	50	13	drilled	G 1/8" female	1 x	3 x 45°	6 x 45°	20 - 50
7023251	4903.15	62	17	drilled	G 1/4" female	1 x	3 x 45°	6 x 45°	30 - 80

with inserts M 3



Part no.	Order no.	L mm	D mm	Nozzle inserts	Connection D1	d 1 45°	d 2 80°	d 3 45°	min. – max. pipe inner \varnothing mm
7003901	2251.14	35	14	M3	G 1/8" female	1 x	2 x 60°	8 x 45°	20 - 50
7003902	2252.14	35	14	M3	G 1/8" female	1 x	4 x 60°	6 x 45°	20 - 50
7003903	2254.15	35	17	M3	G 1/4" female	1 x	2 x 60°	8 x 45°	30 - 80
7003904	2255.15	35	17	M3	G 1/4" female	1 x	4 x 60°	6 x 45°	30 - 80

By ordering please specify the working pressure and flow rate of the used pump!