

# DX1003-T

The DX modular housing arrangement offers a flexible and space conscious solution to integrating our innovative DXO Cartridge to both new and existing systems. We provide up to 12 cartridges as a single unit in a compact and easily maintainable layout.

The unit can be supplied with a number of standard options to provide an effective conditioning and monitoring package to suit the majority of systems. The flexibility of the unit allows tailoring to a customer's specific requirements.

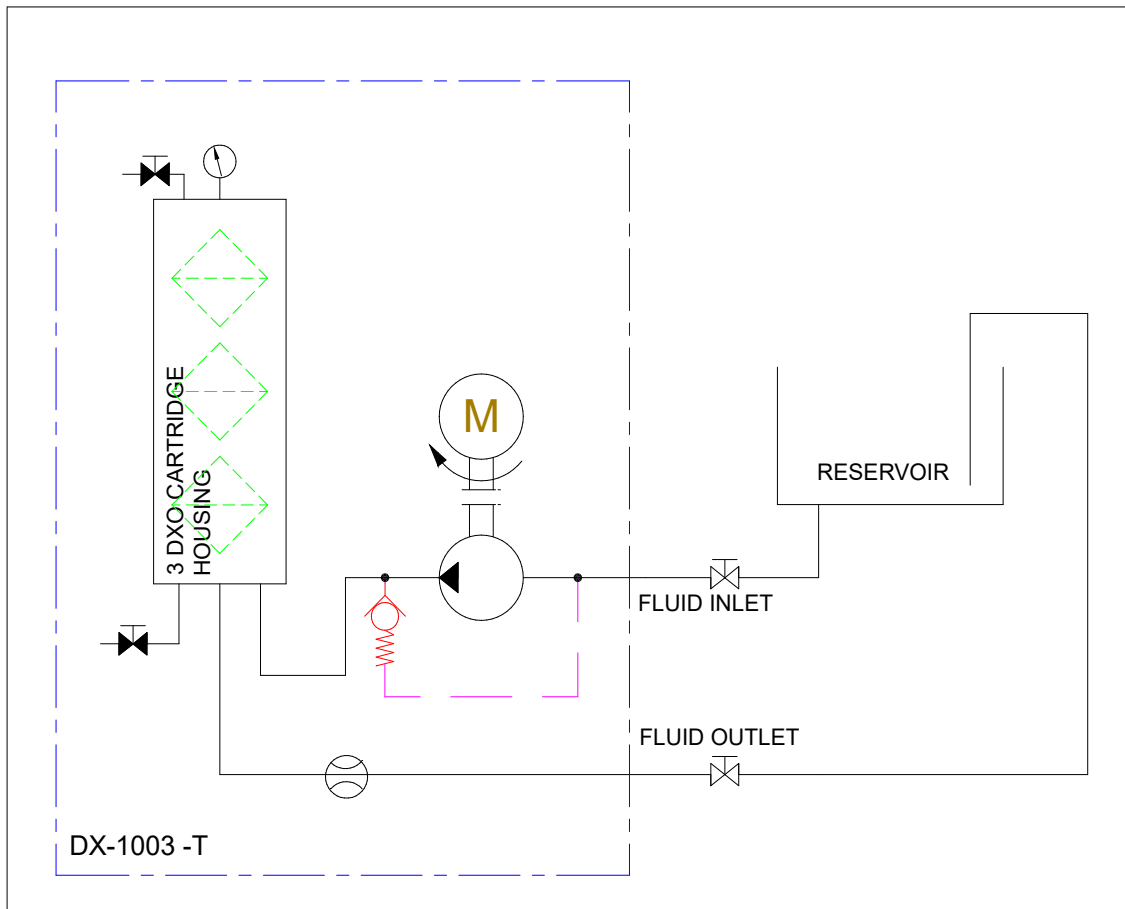


## DXO Cartridge

Contamination capacity:	1955 g, 0.1 micron
Water absorption, free and bound:	2600ml
Material insert:	PP Cellulose mix



### Technical Specification



#### DX1003-T

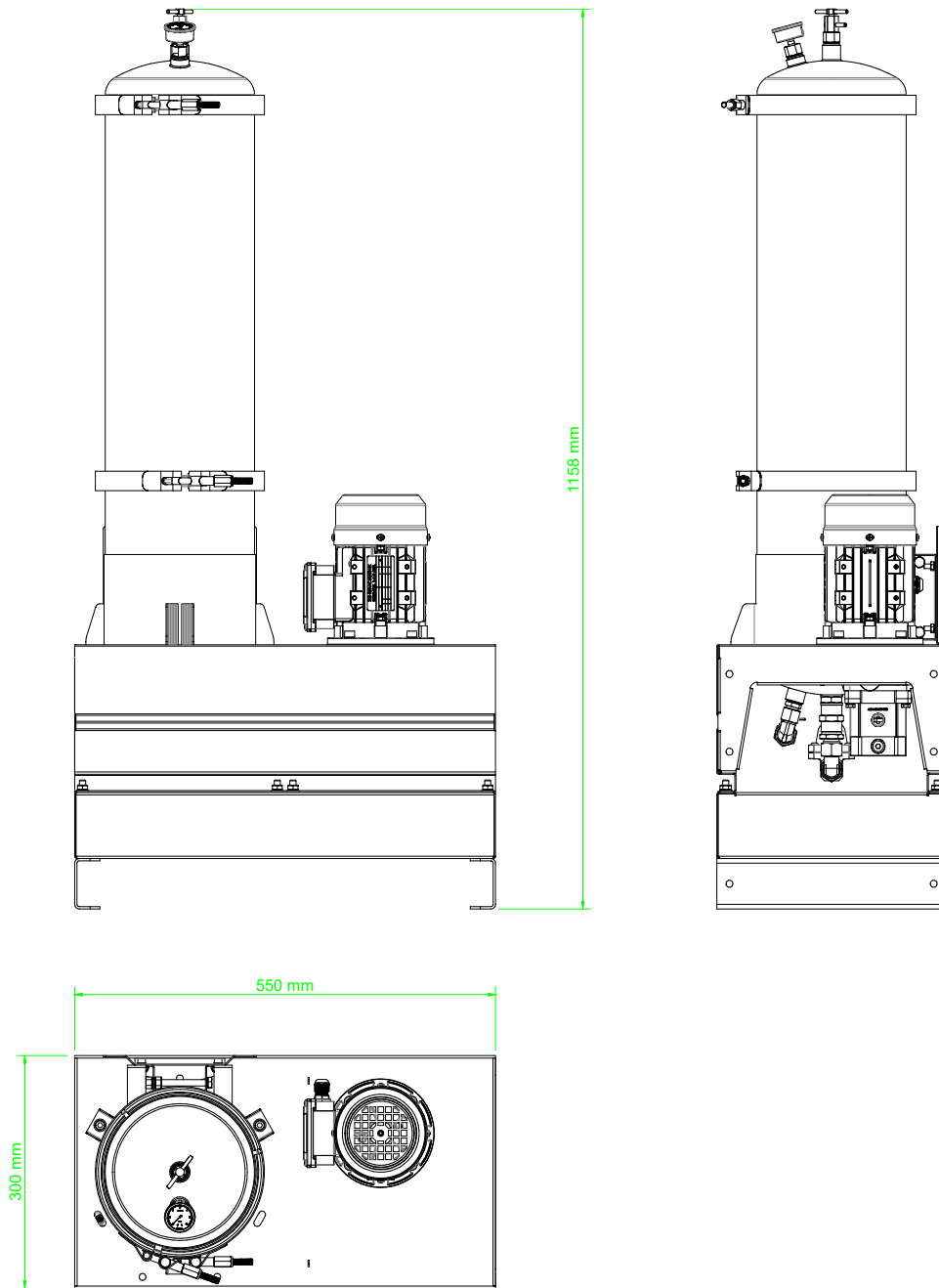
Drive Input	See Model Selector, Page 4, Table D
Pump Connection Ports	3/8" BSP In & Out
Flow Indicator	Visual as Standard
Max Reservoir Capacity	6000l @ 32cSt
Flow Rate	3 lpm @ 32cSt
Particulate Removal	0.1 Micron
Weight [kgs]	30
Measure [mm]	H 1158 x D 300 x L 550
Material	SS316
DXO Cartridge	x 3

**LONGWALL HYDRAULICS**

**NSW 02 4271 2999 - QLD 07 4952 3612**

**www.longwall.net**

### General Arrangement



## Model Code Selector

### Model Code Selector

Series **A B C D E F G H I J K L**  
**DX 10 03 - T G - - - - - 1 - NNN**  
(Special Execution On Request)

#### A Configuration

1	1 x Single Canister - 1 x DX Cartridge
2	1 x Single Canister + 1 x Dual Extender - 2 x DX Cartridge
3	1 x Single Canister + 1 x Triple Extender - 3 x DX Cartridge
4	2 x Single Canister + 2 x Dual Extenders - 4 x DX Cartridge
6	2 x Single Canister + 2 x Triple Extender - 6 x DX Cartridge
9	3 x Single Canister + 3 x Triple Extender - 9 x DX Cartridge
12	4 x Single Canister + 4 x Triple Extender - 12 x DX Cartridge

#### B Mounting

T	Backplate/Tray
---	----------------

#### C Insert

G	Green
---	-------

#### D Feed Type

Configuration		A	110v
		1-6	B
		C	415v
		D	110v
9,12		E	220v
		F	415v
		H	Hydraulic
1-6		P	Pneumatic
9,12		Q	Pneumatic
		N	None

#### E Frequency

1	50 Hz
2	60 Hz
N	Not Applicable

#### F Flow Indicator

V	Visual Indication	*
D	Digital Indication	*
C	Both	*
N	None	

#### G Electrical Start/Stop Control Panel

1	Yes
N	None

#### H Overspill Sensor

1	Yes
N	None

#### I Condition Monitoring

1	Tan Delta	*
2	Particle Counter	*
3	Both	*
N	None	

#### J Interconnection Type

1	Pipework - SS
---	---------------

#### K Certification

1	Standard
2	Atex Zone 1
3	Atex Zone 2

#### L Painting

(Motor and Pump Only)	
N	None
P	Yes

\* Only available in conjunction with Option G1

